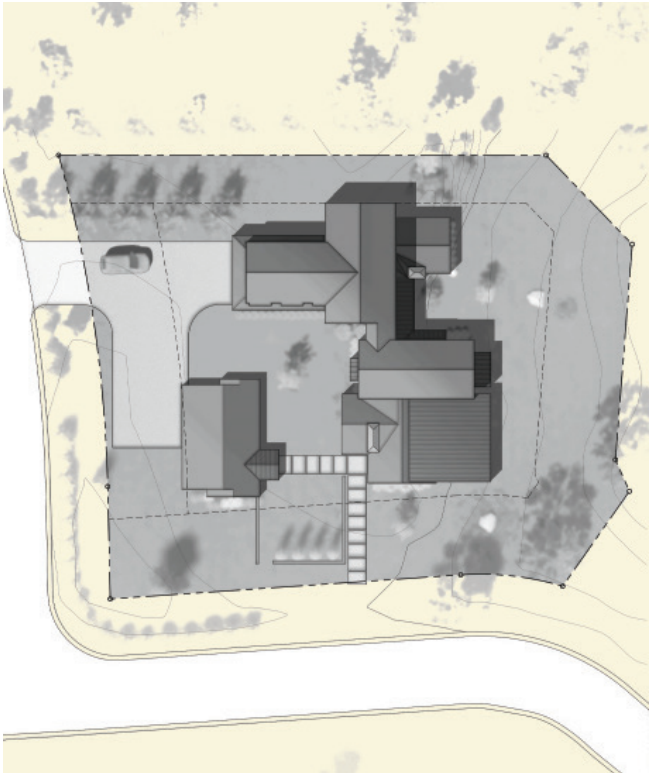


APERTURE



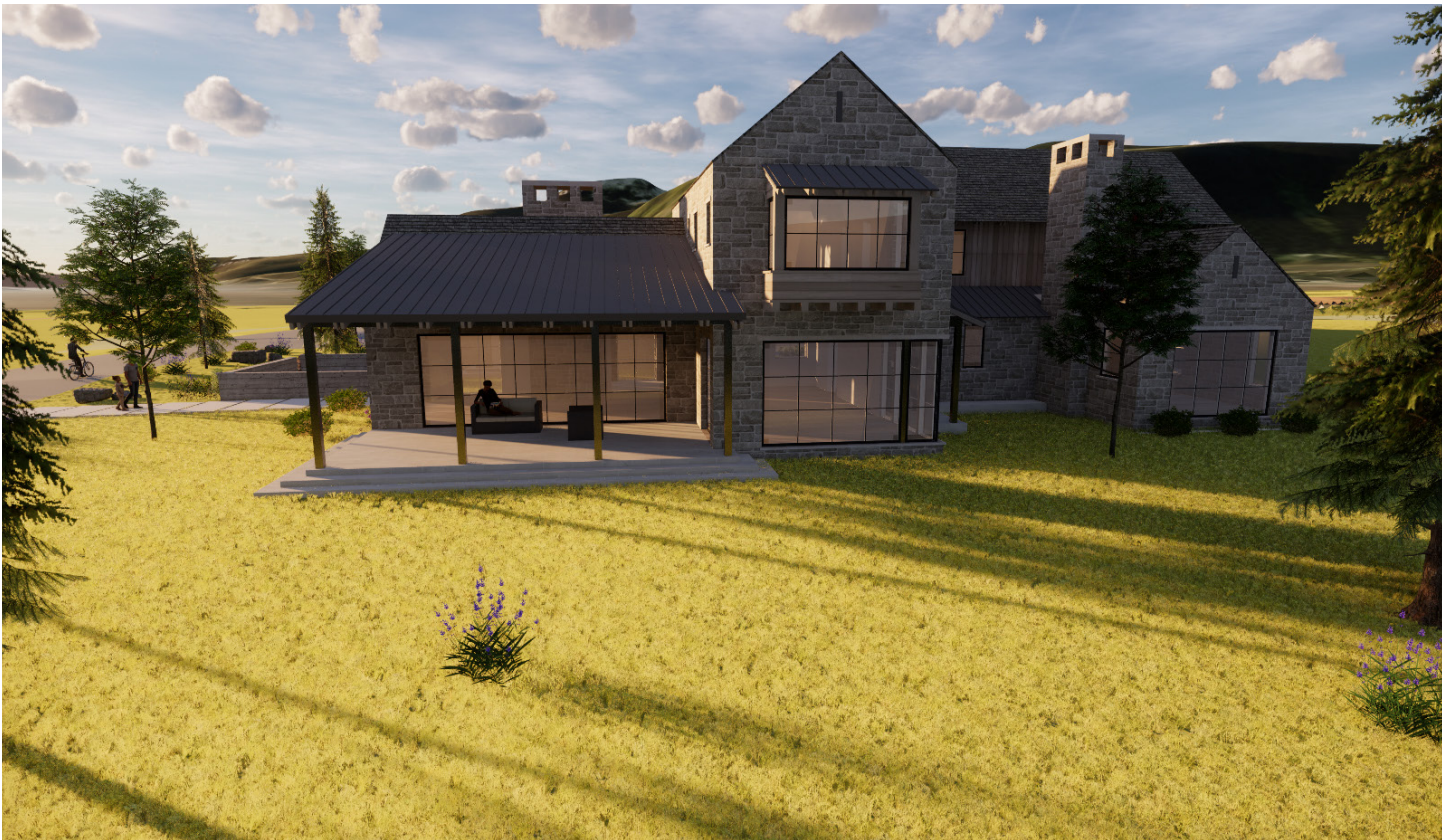
33 Aperture Way

- ▲ Breaking ground summer 2020
 - ▲ 0.51 acres
 - ▲ Main residence: first floor 2,997 sf; second floor 1,698 sf
 - ▲ Accessory building: 719 sf
 - ▲ Total finished interior space: 5,414 sf
 - ▲ Flooring will be wood, stone, tile and carpet
 - ▲ Water and sewer service provided by Town of Crested Butte
 - ▲ Surfaces in the kitchen and bathrooms will be stone and tile
 - ▲ Windows will be low E sealed double pane
 - ▲ Heating will be radiant in-floor
 - ▲ Systems will include security, sound, temperature alerts and remote access control
 - ▲ Features exterior decks, covered porches and landscaping
 - ▲ \$5,200,000
- *Detailed spec sheets are available upon request*





33 Aperture Way will be built on lot 6, which is just over a half-acre and features views up Paradise Divide. The home was designed by Stocker Hoesterey Montenegro Architects, PLLC (SHM), which is based in Dallas and now has an office in Crested Butte. SHM was founded in 2005 by the principals, David Stocker, Mark Hoesterey and Enrique Montenegro, who share a passion for practicing architecture that is engaged to make a lasting impact on every life it touches. Michael Weil Custom Homes in Crested Butte will build the home, with excavation work scheduled for summer 2020.





Of all the places to call home in the upper Gunnison Valley, there's never been a neighborhood like Aperture. Adjacent to the Town of Crested Butte and walking distance to Elk Avenue, Aperture is accessed from Eighth Street or Gothic Road via the new Pyramid Avenue Bridge. Amenities include a private homeowner river park and pavilion, 1,100 feet of Slate River frontage and a landscaped pedestrian trail connecting to the Crested Butte Recreation Path. Enjoy all the conveniences of town with the space, views, privacy and quiet of a mountain home. Aperture truly is the best of both worlds.

Aperturecb.com

Joel Vosburg
970.209.0609
JVosburg@MountainOffice.com

Charlie Farnan
970.209.1581
CFarnan@MountainOffice.com

bluebird
real estate

The Mountain Office